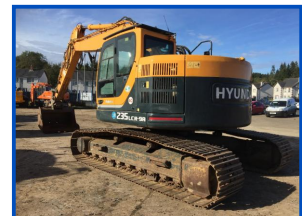


# Hyundai Robex 235 LCR-9A



**£65,000.00**

One owner from new. Check valves boom and dipper. Hydraulic hitch. Hammer piped plus additional piping. 24 ton excavator, zero tail swing on a long carriage. Fantastic machine which is extremely well balanced. Prolec system fitted. Air conditioning. The best 24 ton excavator on the market today. NO buckets included at this price.

Product Details	
<b>Category/Type</b>	<b>Excavators (Over 4 Ton)</b>
<b>Make</b>	<b>Hyundai</b>
<b>Model</b>	<b>Robex 235 LCR-9A</b>
<b>Year</b>	<b>2014</b>
<b>Hours</b>	<b>-</b>

**10-12 Carhill Road, Garvagh, Coleraine, N Ireland, BT51 5NJ**

**Office: +44 (0)28 295 58605 Eugene: +44 (0)7968 948326 Daniel: +44 (0)7821324711**  
**www.mullanplantsales.com reception@mullanautosales.com**